

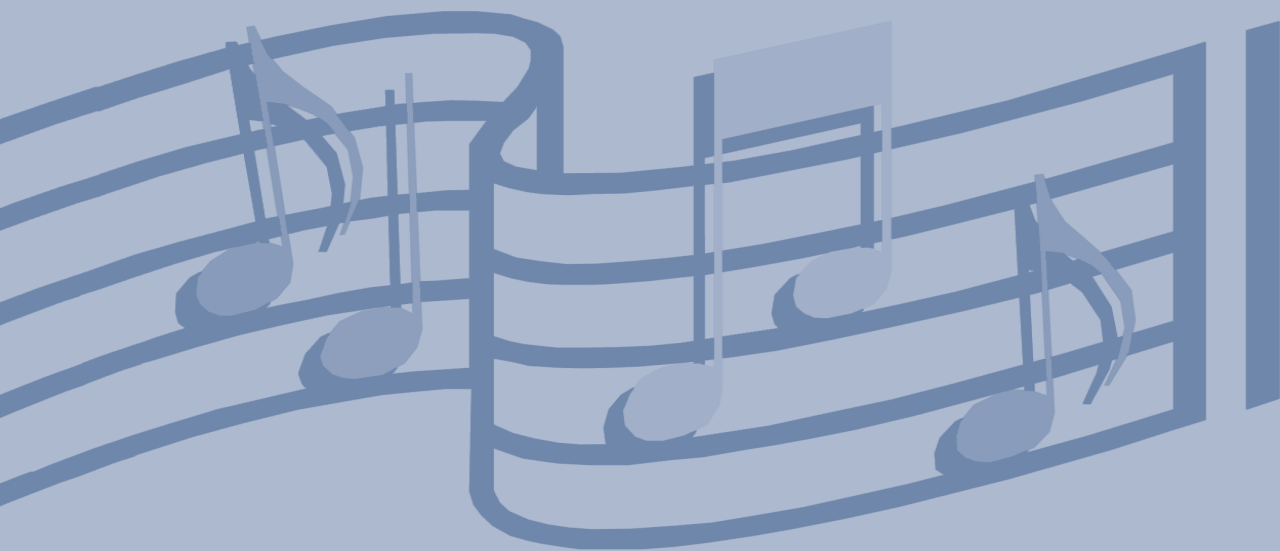
DARK NIGHT OF THE SOUL
Gjeilo

SSAATTBB, accompanied

HL08501791
WW1463
US \$7.95

DARK NIGHT OF THE SOUL

SSAATTBB with Piano and String Quartet



Poem by
St. John of the Cross
(1542-1591)

Music by
Ola Gjeilo

Licensed to ZézereArts Festival, limit: 60 copies.



A DIVISION OF GIA PUBLICATIONS, INC.

waltonmusic.com

Full Score and Instrumental Parts available separately: WW1463A

Full Score only: WW1463B

About the Work

Dark Night of the Soul was written in 2010, and premiered that year by the Phoenix Chorale. The text, three stanzas from St. John of the Cross' (1542-1592) magical poem *Dark Night of the Soul*, was suggested to me by Joel Rinsema, Executive Director of the Phoenix Chorale, and I fell in love with its passionate spirituality right away:

*One dark night,
fired with love's urgent longings
- ah, the sheer grace! -
I went out unseen,
my house being now all stilled.*

*In darkness, and secure,
by the secret ladder, disguised,
- ah, the sheer grace! -
in darkness and concealment,
my house being now all stilled.*

*On that glad night,
in secret, for no one saw me,
nor did I look at anything,
with no other light or guide
than the one that burned in my heart.*

One of the things I wanted to do in this piece was to make the choir and piano fairly equal, as if in a dialogue; often the piano is accompanying the choir, but sometimes the choir is accompanying the piano (or violin), taking the role of a soft and rich string orchestra. I love the sound of voices humming chords. The sound can be so evocative and warm, especially when doubled by a string quartet. To me, that sound combination has a similar effect to a great synth pad, only it feels more organic and alive.

Performance Notes

- I recommend having the piano lid at half stick (with the opening facing the audience), since the piano is partly soloistic in this piece.
- The soprano solos are meant mainly as a coloring – floating lightly on top of the ensemble – more than solos as a main focal point. Ideally, the singer should stand within the choir.
- Piano-oriented sections, such as the one starting at measure 196 (letter O), should be treated almost like a concerto, where the conductor follows the pianist to a degree – and the piano part should be performed with a slightly soloistic level of freedom
- To find my initial intentions in terms of tempi, style, balance, and dynamics, check out the recording featured on waltonmusic.com, or my own website at olagjeilo.com (within the sheet music section).

-Ola Gjeilo

Duration: Approx. 14:00

About the Composer



Ola Gjeilo was born in Norway in 1978 and moved to the United States in 2001 to begin his composition studies at the Juilliard School in New York City, where he currently resides and works as a full-time composer.

Ola's albums include his 2016 Decca Classics label debut, *Ola Gjeilo*, featuring Tenebrae and Voces8, as well as his two piano records (*Stone Rose*, *Piano Improvisations*) and Phoenix Chorale's *Northern Lights*.

Gjeilo's (pronounced Yay-lo) choral works are published by Walton Music, wind band works by Boosey & Hawkes, and piano pieces by Walton Music and Edition Peters.

For more information, visit olagjeilo.com or find Ola on Facebook, Twitter, and Instagram.

Dark Night of the Soul

New York City, Jan. 2010

*St. John of the Cross
(1542-1591)

For SSAATTBB Chorus, Piano
and String Quartet

OLA GJEILO

p $\text{♩} = 178$

Soprano 1&2
Alto 1&2
Tenor 1&2
Bass 1&2

Dark night,

Piano

ff $\text{♩} = 178$ *sim.*

(without sustain pedal in 7/8 meter sections)

6

S
A
T
B

Pno.

A

* From *The Collected Works of St. John of the Cross*, translated by Kieran Kavanaugh and Otilio Rodriguez
Copyright (c) 1964, 1979, 1991 by Washington Province of Discalced Carmelites.
Used by permission. www.icspublications.org

4

12 *mp*

T. Aah.

B. *mp* Aah.

Pno.

17 **B** *mf*

S1 Aah

S2 *mf* Aah

A1 *ff* One dark night,

A2 *mf* Aah

T1 *ff* One dark night,

T2 *mf* Aah

B1 *ff* One dark night,

B2 *mf* Aah

Pno.

24

S1
Aah

S2
Aah

A1
fired with love's

A2
Aah

T1
8
fired with love's

T2
8
Aah

B1
fired with love's

B2
Aah

Pno.
24

30

S1

S2

A1

A2

T1

T2

B1

B2

Pno.

ur - gent long - - -

Aah

ur - gent long - - -

Aah

ur - gent long - - -

Aah

30

36 C

S1 Aah

S2 Aah

A1 - ings ah,

A2 Aah

T1 - ings ah,

T2 Aah

B1 - ings ah,

B2 Aah

Pno.

42

S1

S2

A1

A2

T1

T2

B1

B2

Pno.

The image shows a musical score for a vocal ensemble and piano. It consists of nine staves. The top eight staves are for voices: Soprano 1 (S1), Soprano 2 (S2), Alto 1 (A1), Alto 2 (A2), Tenor 1 (T1), Tenor 2 (T2), Bass 1 (B1), and Bass 2 (B2). The bottom staff is for Piano (Pno.). The music is in the key of D major (one sharp) and 4/4 time. Measures 42-47 are shown. The vocal parts feature a melodic line with a long slur over the entire phrase. The piano accompaniment consists of a rhythmic pattern in the right hand and a block-chord accompaniment in the left hand.

48 Soprano solo

Sop. Solo *mf* D

S1 *mf* Aah

S2 *mf* Aah

A1 the sheer grace! *mf* Aah

A2 *ff* I

T1 the sheer grace! *mf* Aah

T2 *ff* I

B1 the sheer grace! *mf* Aah

B2 *ff* I

Pno. 48

54

Sop. Solo

went out

S1

S2

A1

A2

went out

T1

T2

went out

B1

B2

went out

54

Pno.

60 *mf*

Sop. Solo un - seen, my house

S1 Aah

S2 Aah

A1 Aah

A2 un - seen, my house

T1 Aah

T2 un - seen, my house

B1 Aah

B2 un - seen, my house

Pno.

66

Sop. Solo

be - ing now all

S1

Aah

S2

Aah

A1

Aah

A2

be - ing now all

T1

Aah

T2

be - ing now all

B1

Aah

B2

be - ing now all

66

Pno.

72 E

Sop. Solo *stilled.*

S1 *ah,*

S2 *ah,*

A1 *ah,*

A2 *stilled.* *Ah,*

T1 *ah,*

T2 *stilled.* *Ah,*

B1 *ah,*

B2 *stilled.* *Ah,*

Pno. 72

78

Sop. Solo

Ah, _____

S1

S2

A1

A2

T1

T2

B1

B2

78

Pno.

84 F

Sop. Solo
 — the sheer grace!

S1
 — the sheer grace! *ff* my house

S2
 — the sheer grace! Aah

A1
 — the sheer grace! Aah

A2
 — the sheer grace! my house

T1
 — the sheer grace! Aah

T2
 — the sheer grace! my house

B1
 — the sheer grace! Aah

B2
 — the sheer grace! my house

Pno.
 84

90

Sop. Solo

Aah

S1

be - ing now

S2

A1

A2

be - ing now

T1

T2

be - ing now

B1

B2

be - ing now

Pno.

90

96

Sop. Solo

all _____ *Gliss.* _____ *mf* all _____ 3

S1

all _____ stilled, _____ all _____ *Gliss.* _____ 3

S2

all _____ stilled, _____ all _____

A1

all _____ stilled, _____ all _____

A2

all _____ stilled, _____ all _____ *Gliss.* _____ 3

T1

all _____ stilled, _____ all _____

T2

all _____ stilled, _____ all _____ *Gliss.* _____ *Gliss.* _____ 3

B1

all _____ stilled, _____ all _____

B2

all _____ stilled _____ all _____ *Gliss.* _____ 3

Pno.

96

102 (End of solo)

Sop. Solo

stilled.

S1

stilled.

S2

stilled.

A1

stilled.

A2

stilled.

T1

stilled.

T2

stilled.

B1

stilled.

B2

stilled.

Pno.

108 G ♩ = 54
pp
 S Mmm
 A *pp* Mmm
 T
 B

108 ♩ = 54
 Pno. *p*
 (with sustain pedal)

114 H
 S
 A
 T *pp* Mmm
 B *pp* Mmm

114
 Pno.

120

S

A

T

B

Pno.

125

S

A

T

B

Pno.

129

S

A

T

B

129

Pno.

♩. = 48

mf non rubato

134

Tenors

mp

In dark -

Basses

mp

In dark -

134

Pno.

137

T

ness, and se-cure,

B

ness, and se-cure,

137

Pno.

140

T
8 by the sec - ret lad - der, dis - guised,

B
by the sec - ret lad - der, dis - guised,

Pno.

143

T
8 J *mf* in dark - ness

B
mf in dark - ness

143

f

146

T
8 and con - ceal - ment, *f* my

B
and con - ceal - ment, *f* my

146

Pno.

ff

149 23

T
8 house _____ be - ing now all _____ stilled,

B
house _____ be - ing now all _____ stilled,

Pno.

152 *mf* 3

T
8 all _____ stilled.

B
mf all _____ stilled.

Pno.

155 K *pp*

S
Ah, the sheer _____

A
pp Ah, the sheer

T
8 Ah, the sheer

B

Pno.

24 158 Soprano solo

Sop. Solo *p* Ah, *3* *3*

S grace! Ah, the

A grace! Ah, the

T *8* grace! Ah, the

B *pp* grace! Ah, the

Pno. 158

Sop. Solo *mp* the sheer grace!

S sheer grace! in

A sheer grace! in

T *8* sheer grace! in

B sheer grace! in

Pno. 161

164 L *Gliss.* *mp* 25

Sop. Solo
 S
 A
 T
 B

dark - ness and con - ceal -

164 *f* *cresc.*

Pno.

167 *mf* (End of solo) *mp*

Sop. Solo
 S
 A
 T
 B

ment, my house
 ment, my house house be - ing
 ment, my house house be - ing

167 *mp* *ff*

Pno.

170

S
be - ing now all

A
be - ing now all
now all stilled, all

T
be - ing now all
now all stilled, all

B.
be - ing now all

mp
(mp)

Pno.

170

mf

173

rit. M $\text{♩} = 52$

S
stilled. Ah, *f*

A
stilled. Ah, *f*

T
stilled. Ah, *f*

B.
stilled. Ah, *f*

Pno.

173

rit. $\text{♩} = 52$

f

176

S
the sheer

A
the sheer

T
the sheer

B
the sheer

Pno.

178

S
grace! Ah,

A
grace! Ah,

T
grace! Ah,

B
grace! Ah,

Pno.

180

S the sheer

A the sheer

T the sheer

B the sheer

Pno.

poco rit. N a tempo

182

S grace! Ah, *ff*

A grace! Ah, *ff*

T grace! Ah, *ff*

B grace! Ah, *ff*

Pno. *cresc.* a tempo *ff*

184

S
the sheer

A
the sheer

T
the sheer

B
the sheer

Pno.

186

S
grace! Ah,

A
grace! Ah,

T
grace! Ah,

B
grace! Ah,

Pno.

188

S the sheer

A the sheer

T the sheer

B the sheer

Pno.

190

S grace! *mp*

A grace! *mp*

T grace! *mp*

B grace! *mp*

Pno.

190

f

193

Pno.

196

Pno.

O $\text{♩} = 68$

p

198

Pno.

200

S

pp

Mmm

A

pp

Mmm

T

pp

Mmm

B

pp

Mmm

rit. -----

200

Pno.

mp

rit. -----

8va

P

a tempo

204

pp

S
Ooh

A
Ooh

T
Ooh

B
Ooh

Pno.

204 (8va)

p

S
poco rit.

A
poco rit.

T
poco rit.

B
poco rit.

Pno.

206

poco rit.

Q $\text{♩} = 54$

208 *p*

S On that glad night, on that glad night, in

A On that glad night, on that glad night, in

T On that glad night, on that glad night, in

B On that glad night, on that glad night, in

Pno. *pp*

213 *pp* Ah

Sop. Solo

R $\text{♩} = 63$

S sec - ret, for no one saw me, ah, the

A sec - ret, for no one saw me, ah, the

T sec - ret, for no one saw me, ah, the

B sec - ret, for no one saw me, ah, the

Pno. *pp*

217

Sop. Solo

S1
sheer grace!

S2
sheer grace!

A1
sheer grace!

A2
sheer grace!

T1
sheer grace!

T2
sheer grace!

B1
sheer grace!

B2
sheer grace!

Pno.

pp *p* *pp* *pp*

217

S ♩ = 178

221

S1 *f*
Aah

S2 *f*
Aah

A1 *f*
Aah

A2 *f*
Aah

T1 *f*
Aah

T2 *f*
Aah

B1 *f*
Aah

B2 *f*
Aah

Pno. 221 *ff*

227

S1 *mf* Ah, the grace, ah, the sheer grace! Ah, the grace,

S2 *mf* Ah, the grace, ah, the sheer grace! Ah, the grace,

A1 *mf* Ah, the grace, ah, the sheer grace! Ah, the grace,

A2 *mf* Ah, the grace, ah, the sheer grace! Ah, the grace,

T1 *mf* Ah, the grace, ah, the sheer grace! Ah, the grace,

T2 *mf* Ah, the grace, ah, the sheer grace! Ah, the grace,

B1 *mf* Ah, the grace, ah, the sheer grace! Ah, the grace,

B2 *mf* Ah, the grace, ah, the sheer grace! Ah, the grace,

Pno. 227

232

S1
ah, the sheer grace! Ah, the grace, ah, the sheer grace! Ah, the grace, _____

S2
ah, the sheer grace! Ah, the grace, ah, the sheer grace! Ah, the grace, _____

A1
ah, the sheer grace! Ah, the grace, ah, the sheer grace! Ah, the grace, _____

A2
ah, the sheer grace! Ah, the grace, ah, the sheer grace! Ah, the grace, _____

T1
ah, the sheer grace! Ah, the grace, ah, the sheer grace! Ah, the grace, _____

T2
ah, the sheer grace! Ah, the grace, ah, the sheer grace! Ah, the grace, _____

B1
ah, the sheer grace! Ah, the grace, ah, the sheer grace! Ah, the grace, _____

B2
ah, the sheer grace! Ah, the grace, ah, the sheer grace! Ah, the grace, _____

Pno.
232

T

237 *f*

S1
nor _____ did I look, _____

S2
mf
Ah, the grace, ah, the sheer grace! Ah, the grace, ah, the sheer grace! Ah, the grace,

A1
mf
Ah, the grace, ah, the sheer grace! Ah, the grace, ah, the sheer grace! Ah, the grace,

A2
ff
nor _____ did I look, _____

T1
mf
8 Ah, the grace, ah, the sheer grace! Ah, the grace, ah, the sheer grace! Ah, the grace,

T2
ff
8 nor _____ did I look, _____

B1
mf
Ah, the grace, ah, the sheer grace! Ah, the grace, ah, the sheer grace! Ah, the grace,

B2
ff
nor _____ did I look, _____

Pno.
237
sim.

242

S1
nor

S2
ah, the sheer grace! Ah, the grace, ah, the sheer grace! Ah, the grace, ah, the sheer grace!

A1
ah, the sheer grace! Ah, the grace, ah, the sheer grace! Ah, the grace, ah, the sheer grace!

A2
nor

T1
8 ah, the sheer grace! Ah, the grace, ah, the sheer grace! Ah, the grace, ah, the sheer grace!

T2
8 nor

B1
ah, the sheer grace! Ah, the grace, ah, the sheer grace! Ah, the grace, ah, the sheer grace!

B2
nor

Pno.
242

247

S1
_____ did I look _____

S2
Ah, the grace, ah, the sheer grace! Ah, the grace, ah, the sheer grace! Ah, the grace,

A1
Ah, the grace, ah, the sheer grace! Ah, the grace, ah, the sheer grace! Ah, the grace,

A2
_____ did I look _____

T1
8 Ah, the grace, ah, the sheer grace! Ah, the grace, ah, the sheer grace! Ah, the grace,

T2
8 _____ did I look _____

B1
Ah, the grace, ah, the sheer grace! Ah, the grace, ah, the sheer grace! Ah, the grace,

B2
_____ did I look _____

Pno.
247

252

S1 at a - - - -

S2 ah, the sheer grace! Ah, the sheer grace, ah, the sheer grace! Ah, the sheer grace,

A1 ah, the sheer grace! Ah, the sheer grace, ah, the sheer grace! Ah, the sheer grace,

A2 at a - - - -

T1 8 ah, the sheer grace! Ah, the sheer grace, ah, the sheer grace! Ah, the sheer grace,

T2 8 at a - - - -

B1 ah, the sheer grace! Ah, the sheer grace, ah, the sheer grace! Ah, the sheer grace,

B2 at a - - - -

Pno. 252

256 U

S1
ny - thing. Ah, the grace, ah, the sheer grace! *mf*

S2
ah, the sheer grace! Ah, the grace, ah, the sheer grace! with _____ *ff*

A1
ah, the sheer grace! Ah, the grace, ah, the sheer grace! with _____ *ff*

A2
ny - thing. Ah, the grace, ah, the sheer grace! *mf*

T1
ah, the sheer grace! Ah, the grace, ah, the sheer grace! with _____ *ff*

T2
ny - thing. Ah, the grace, ah, the sheer grace! *mf*

B1
ah, the sheer grace! Ah, the grace, ah, the sheer grace! with _____ *ff*

B2
ny - thing. Ah, the grace, ah, the sheer grace! *mf*

Pno.
256

261

S1 Aah _____ Ah, the grace, ah, the sheer grace!

S2 _____ no _____

A1 _____ no _____

A2 Aah _____ Ah, the grace, ah, the sheer grace!

T1 _____ no _____

T2 Aah _____ Ah, the grace, ah, the sheer grace!

B1 _____ no _____

B2 Aah _____ Ah, the grace, ah, the sheer grace!

Pno. 261

267

S1 Ah, the grace, ah, the sheer grace! Ah, the grace, ah the sheer grace! Ah, the grace,

S2 oth - er light,

A1 oth - er light,

A2 Ah, the grace, ah, the sheer grace! Ah, the grace, ah the sheer grace! Ah, the grace,

T1 oth - er light,

T2 Ah, the grace, ah, the sheer grace! Ah, the grace, ah, the sheer grace! Ah, the grace,

B1 oth - er light,

B2 Ah, the grace, ah, the sheer grace! Ah, the grace, ah, the sheer grace! Ah, the grace,

267

Pno.

272 *f* V

S1 *f*
or _____ guide _____ than the one _____

S2 *f*
Aah, _____ Ah, the grace,

A1 *f*
Aah, _____ Ah, the grace,

A2 *ff*
or _____ guide _____ than the one _____

T1 *f*
8 Aah, _____ Ah, the grace,

T2 *ff*
8 or _____ guide _____ than the one _____

B1 *f*
Aah, _____ Ah, the grace,

B2 *ff*
or _____ guide _____ than the one _____

Pno. 272

278

S1 that burned

S2 ah, the sheer grace! Ah, the grace, ah, the sheer grace! On that night, on that glad night,

A1 ah, the sheer grace! Ah, the grace, ah, the sheer grace! On that night, on that glad night,

A2 that burned

T1 ah, the sheer grace! Ah, the grace, ah, the sheer grace! On that night, on that glad night,

T2 that burned

B1 ah, the sheer grace! Ah, the grace, ah, the sheer grace! On that night, on that glad night,

B2 that burned

Pno. 278

Detailed description: This page contains a musical score for a choral ensemble and piano. The score is in G major (one sharp) and 4/4 time. It begins at measure 278. The vocal parts are arranged in two systems. The first system includes Soprano 1 (S1), Soprano 2 (S2), Alto 1 (A1), Alto 2 (A2), Tenor 1 (T1), and Tenor 2 (T2). The second system includes Bass 1 (B1), Bass 2 (B2), and Piano (Pno.). The lyrics are: "that burned" (S1, A2, T2, B2) and "ah, the sheer grace! Ah, the grace, ah, the sheer grace! On that night, on that glad night," (S2, A1, T1, B1). The piano accompaniment features a rhythmic pattern of eighth notes in the right hand and chords in the left hand.

283

S1 *Gliss.*
in _____ my heart _____

S2
On that glad night, on that glad night, On that glad night, on that glad night, Ah _____

A1
On that glad night, on that glad night, On that glad night, on that glad night, Ah _____

A2 *Gliss.*
in _____ my heart, _____

T1
8 On that glad night, on that glad night, On that glad night, on that glad night, Ah _____

T2 *Gliss.*
8 in _____ my heart _____

B1
On that glad night, on that glad night, On that glad night, on that glad night, Ah _____

B2 *Gliss.*
in _____ my heart _____

Pno. 283

288

S1 that _____ burned _____ in my

S2 _____ On that glad night, on that glad night, On that glad night, on that glad night,

A1 _____ On that glad night, on that glad night, On that glad night, on that glad night,

A2 that _____ burned _____ in my

T1 ₈ _____ On that glad night, on that glad night, On that glad night, on that glad night,

T2 that _____ burned _____ in my

B1 _____ On that glad night, on that glad night, On that glad night, on that glad night,

B2 that _____ burned _____ in my

288

Pno.

293

W *ff*

S1 heart. _____ Ah, the sheer grace,

S2 On that night, on that glad night, On that night, on that glad night, Aah, _____ *ff*

A1 On that night, on that glad night, On that night, on that glad night, Aah, _____ *ff*

A2 heart. _____ Ah, the sheer grace, *ff*

T1 ₈ On that night, on that glad night, On that night, on that glad night, Aah, _____ *ff*

T2 ₈ heart. _____ Ah, the sheer grace, *ff*

B1 On that night, on that glad night, On that night, on that glad night, Aah, _____ *ff*

B2 heart. _____ Ah, the sheer grace, *ff*

Pno. 293 *ff*

298

S1
ah, the sheer grace! Ah, the sheer grace, ah, the sheer grace! Ah, the grace,

S2
Aah,

A1
Aah,

A2
ah, the sheer grace! Ah, the sheer grace, ah, the sheer grace! Ah, the grace,

T1
Aah,

T2
ah, the sheer grace! Ah, the sheer grace, ah, the sheer grace! Ah, the grace,

B1
Aah,

B2
ah, the sheer grace! Ah, the sheer grace, ah, the sheer grace! Ah, the grace,

Pno.
298

302

S1
ah, the sheer grace! Ah the grace, ah the sheer grace! Ah, the grace,

S2
Aah,

A1
Aah,

A2
ah, the sheer grace! Ah the grace, ah the sheer grace! Ah, the grace,

T1
Aah,

T2
ah, the sheer grace! Ah the grace, ah the sheer grace! Ah, the grace,

B1
Aah,

B2
ah, the sheer grace! Ah the grace, ah the sheer grace! Ah, the grace,

Pno.
302

306

S1
ah, the sheer grace! Ah the grace, ah, the sheer grace! Ah, the grace, ah, the sheer grace!

S2
Aah,

A1
Aah,

A2
ah, the sheer grace! Ah the grace, ah, the sheer grace! Ah, the grace, ah, the sheer grace!

T1
Aah,

T2
ah, the sheer grace! Ah the grace, ah, the sheer grace! Ah, the grace, ah, the sheer grace!

B1
Aah,

B2
ah, the sheer grace! Ah the grace, ah, the sheer grace! Ah, the grace, ah, the sheer grace!

Pno.
306

311 x ♩ = 54

S1 Ah, the grace, ah, the sheer — grace! Dark — Night of the

S2 *sub. p* Night of the

A1 *sub. p* Night of the

A2 Ah, the grace, ah, the sheer — grace! Dark — Night of the

T1 *sub. p* Night of the

T2 Ah, the grace, ah, the sheer — grace! Dark — Night of the

B1 *sub. p* Night of the

B2 Ah, the grace, ah, the sheer — grace! Dark — Night of the

Pno. 311 *mf* *p* poco a poco cresc.

316 *rit.* *a tempo*

S
Soul, _____ Dark _____ Night of the

A
Soul, _____ Dark _____ Night of the

T
Soul, _____ Dark _____ Night of the

B
Soul, _____ Dark _____ Night of the

Pno.

320 *f* *rit.* $\text{♩} = 68$ *pp*

S
Soul, _____ Dark _____

A
Soul, _____ Dark _____

T
Soul, _____ Dark _____

B
Soul, _____ Dark _____

Pno.

f *rit.* *mp* *8va*

323

S
Night of

A
Night of

T
Night of

B
Night of

Pno.

325

rit. Freely (♩ = ca. 56)

S
the Soul,

A
the Soul,

T
the Soul,

B
the Soul,

Pno.

325 rit. Freely (♩ = ca. 56)

p

327

S
A
T
B

Pno.

mp *p*

329

S
A
T
B

Mmm

Pno.

pp (Lento)

Licensed to ZêzereArts Festival, limit: 60 copies.